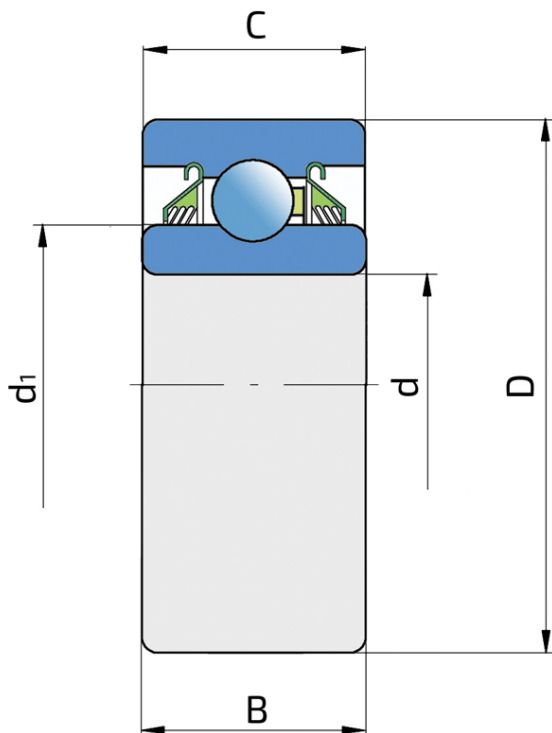
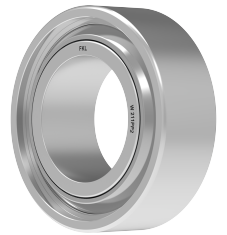


Round Bore Series With Cylindrical Outer Ring - Non-Relubricable Type

W 211PP2

Round Bore Series With Cylindrical Outer Ring - Non-Relubricable Type



Technical Specification

d	Bore diameter	2.1882 inch
d	Bore diameter	55.58 mm
D	Outside diameter	3.937 inch
D	Outside diameter	100 mm
B	Width inner ring	1.313 inch
B	Width inner ring	33.34 mm
C	Width outer ring	1.312 inch
C	Width outer ring	33.34 mm
d1	Outer diameter inner ring	2.72 inch
d1	Outer diameter inner ring	69.1 mm
C _{dyn}	Dynamic load rating	35 kN
C _o	Static load rating	23.2 kN
kg	Mass	1.06 kg

Sealing

T SEAL / T SEAL (2T)

3-lip seal on the both side of the bearing, provides equal protection against contamination. Recommended for application where the possibility of contamination is the same on the both side.

