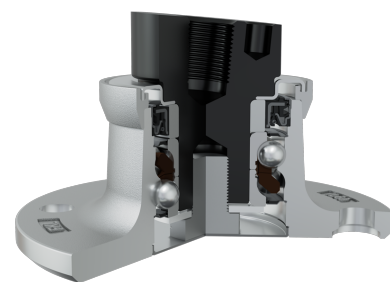
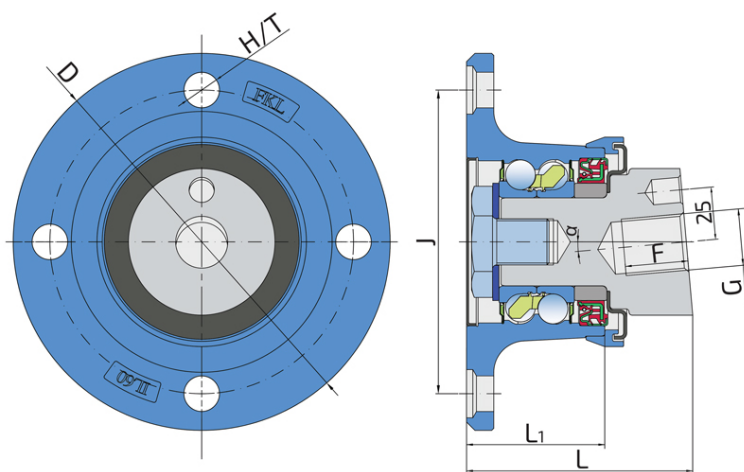


# Maintenance-Free Bearing With Integrated Flange For Harsh Tillage

## IL60-145/4H-M27x2-RH-40

Maintenance-Free Bearing With Integrated Flange For Harsh Tillage

Disc Harrow



### Technical Specification

J	Pitch circle diameter	145 mm
D	Outside diameter	180 mm
H/T	Hole/Thread	4x17 mm
G	Internal Thread	M27x2-7H right mm
L	Total length	108 mm
L1	Total flange length	66 mm
F	Length of threaded part	30 mm
kg	Mass	5.52 kg
$\alpha$	Contact angle	5 °
Cdyn	Dynamic load rating	66.35 kN
Co	Static load rating	56.49 kN
Pu	Fatigue load limit	2.373 kN

## Sealing

### SHEET METAL SHIELD+S SEAL / S SEAL+DIRTBLOCK SEAL

Sheet metal shield and S seal on the base side and S seal and Dirtblock seal on the front side which is exposed to contaminants.

Sheet metal shield and S seal together with attached disc eliminates the possibility of contamination from the flange side.

Dirtblock seal is designed for hard working condition at unfriendly environment. Half metal - half rubber outside diameter provides reliable seal retention in the bore and improves sealing performance. Inside diameter is covered by rubber and improves sealing performance and easy installation. Forged cover plate is additional, strong protection of the Dirtblock seal against mechanical damage.

This sealing provides maximum protection against liquid or solid contaminants, which significantly extends bearing service life.

