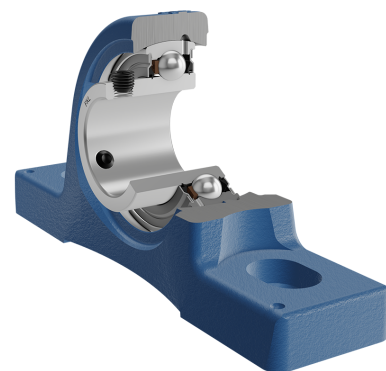
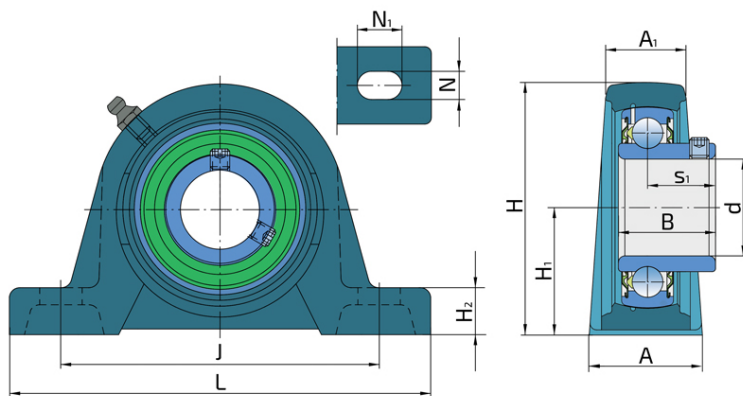


Y-Bearing Plummer Block Units With Grey Cast Iron Housing "S"

UES 209 2S

Y-Bearing Plummer Block Units With Grey Cast Iron Housing "S"



Technical Specification

| | | |
|------|--|----------|
| d | Bore diameter | 45 mm |
| L | Overall length | 190 mm |
| A | Housing contact surface width | 52 mm |
| A1 | Width of the top of the housing | 36 mm |
| H | Housing height | 107 mm |
| H1 | Distance from the contact surface to the bearing axis | 54 mm |
| H2 | Housing foot thickness | 20 mm |
| Jmin | Min. distance between the holes | 136 mm |
| Jmax | Max. distance between the holes | 151 mm |
| N | Diameter of attachment slot | 17 mm |
| N1 | Length of attachment slot | 23.5 mm |
| s1 | Distance from locking device side face to raceway centre | 25.8 mm |
| kg | Mass | 2.23 kg |
| Cdyn | Dynamic load rating | 33.2 kN |
| Co | Static load rating | 21.6 kN |
| Pu | Fatigue load limit | 0.915 kN |

Sealing

S SEAL / S SEAL (2S)

Single lip seal with the labyrinth between the sheet part and the rubber lip which conducts the contact sealing. The friction and speeds are the same as with RS but provides much better protection against the rough impurity particles. This is very good sealing system: the sheet part protects the seal from the soil, dust and rough particles. At the same time makes the labyrinth with the rubber part. The rubber part provides contact sealing which prevents penetration of finer impurities, water, moisture, steam etc. Suitable for neutral conditions because of the presence of the foreign materials. It is used with the Y bearing (standard) and deep groove ball bearings.

