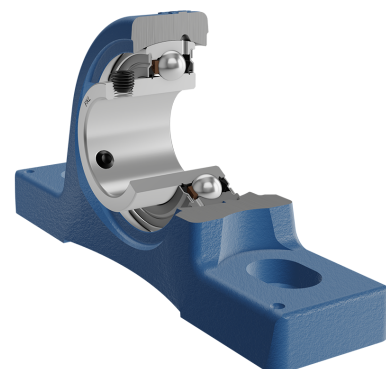
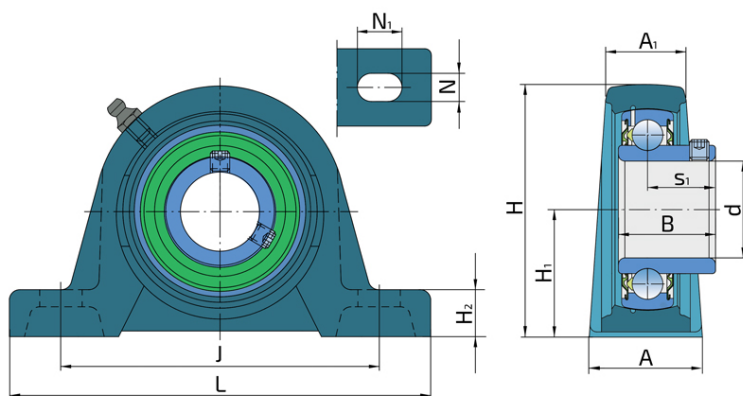


# Y-Bearing Plummer Block Units With Grey Cast Iron Housing "S"

## UES 207 2S

Y-Bearing Plummer Block Units With Grey Cast Iron Housing "S"



### Technical Specification

d	Bore diameter	35 mm
L	Overall length	167 mm
A	Housing contact surface width	46 mm
A1	Width of the top of the housing	28 mm
H	Housing height	92.1 mm
H1	Distance from the contact surface to the bearing axis	47.6 mm
H2	Housing foot thickness	17 mm
Jmin	Min. distance between the holes	122 mm
Jmax	Max. distance between the holes	136 mm
N	Diameter of attachment slot	17 mm
N1	Length of attachment slot	24 mm
s1	Distance from locking device side face to raceway centre	23.3 mm
kg	Mass	1.46 kg
Cdyn	Dynamic load rating	25.5 kN
Co	Static load rating	15.3 kN
Pu	Fatigue load limit	0.655 kN

## Sealing

---

### S SEAL / S SEAL (2S)

Single lip seal with the labyrinth between the sheet part and the rubber lip which conducts the contact sealing. The friction and speeds are the same as with RS but provides much better protection against the rough impurity particles. This is very good sealing system: the sheet part protects the seal from the soil, dust and rough particles. At the same time makes the labyrinth with the rubber part. The rubber part provides contact sealing which prevents penetration of finer impurities, water, moisture, steam etc. Suitable for neutral conditions because of the presence of the foreign materials. It is used with the Y bearing (standard) and deep groove ball bearings.

