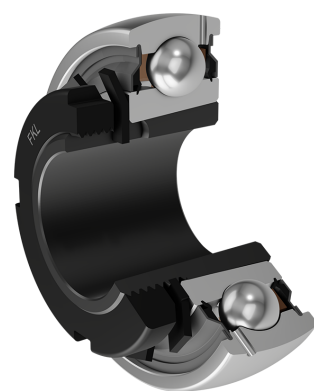
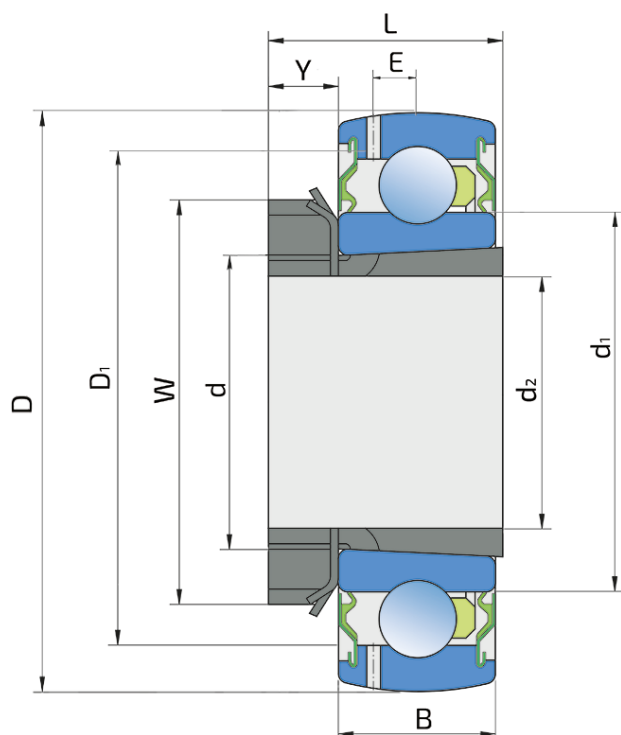


# Y-Ball Bearings With Tapered Bore

## UK 210 2S+H 210

Y-Ball Bearings With Tapered Bore



### Technical Specification

d	Bore diameter	50 mm
D	Outside diameter	90 mm
B	Width inner ring	20 mm
C	Width outer ring	20 mm
d1	Outer diameter inner ring	62.5 mm
E	Distance from raceway centre to the hole for lubrication	6.4 mm
d2	Bore diameter-adaptor sleeve	45 mm
D1	Hole diameter	78.2 mm
L	Width adapter sleeve	55 mm
W	KM nut outside diameter	70 mm
Y	KM nut width	12 mm
C <sub>dyn</sub>	Dynamic load rating	35 kN
C <sub>o</sub>	Static load rating	23.2 kN
P <sub>u</sub>	Fatigue load limit	0.695 kN
kg	Mass	0.44 kg

## Sealing

---

### S SEAL / S SEAL (2S)

Single lip seal with the labyrinth between the sheet part and the rubber lip which conducts the contact sealing. The friction and speeds are the same as with RS but provides much better protection against the rough impurity particles. This is very good sealing system: the sheet part protects the seal from the soil, dust and rough particles. At the same time makes the labyrinth with the rubber part. The rubber part provides contact sealing which prevents penetration of finer impurities, water, moisture, steam etc. Suitable for neutral conditions because of the presence of the foreign materials. It is used with the Y bearing (standard) and deep groove ball bearings.

