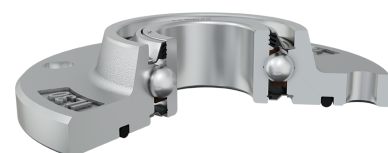
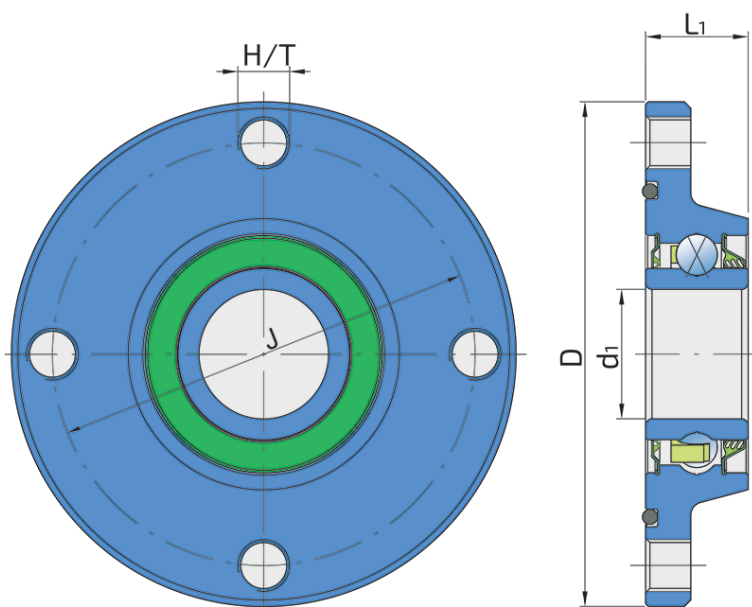


The Bearing Solution For Harsh Seeding Conditions And Coulter Discs Of Ploughs, Integrated Flange

IL30-98/4H-B30

The Bearing Solution For Harsh Seeding Conditions And Coulter Discs Of Ploughs, Integrated Flange

Seeding machines for No-till and Strip-till farming technology; Coulter discs for seeding machines; Marker discs for ploughs



Technical Specification

J	Pitch circle diameter	98 mm
D	Outside diameter	117 mm
H/T	Hole/Thread	4x10 mm
d1	Bore diameter	30 mm
L1	Total flange length	23.8 mm
kg	Mass	0.91 kg
Cdyn	Dynamic load rating	29.6 kN
Co	Static load rating	21 kN
Pu	Fatigue load limit	0.88 kN

Sealing

S SEAL / T SEAL

S seal on the base side and 3-lip seal on the front side which is exposed to contaminants.

The 3-lip seal on the front side protects the bearing from contaminant penetration.

