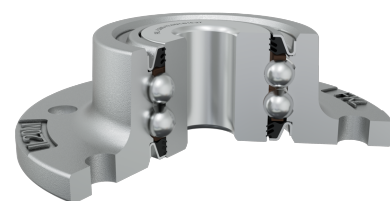
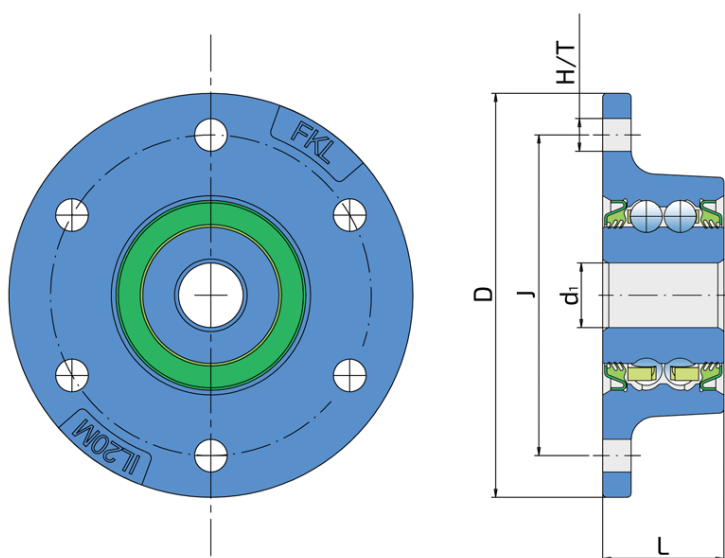
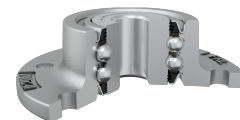


The Bearing Solution For Seeding Machines, Integrated Flange

IL20S-79.4/6H-B16-2T

The Bearing Solution For Seeding Machines, Integrated Flange
Seeding Machine



Technical Specification

J	Pitch circle diameter	79.4 mm
D	Outside diameter	100 mm
H/T	Hole/Thread	6x8.1 mm
L	Total length	30 mm
d1	Bore diameter	16 mm
kg	Mass	0.733 kg
Cdyn	Dynamic load rating	21.6 kN
Co	Static load rating	14.3 kN
Pu	Fatigue load limit	0.601 kN

Sealing

T SEAL / T SEAL (2T)

3-lip seal on the both side of the bearing, provides equal protection against contamination. Recommended for application where the possibility of contamination is the same on the both side.

