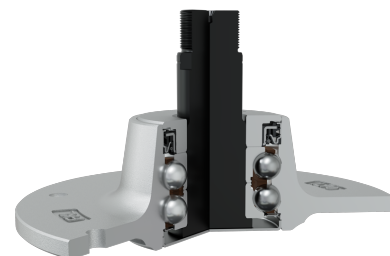
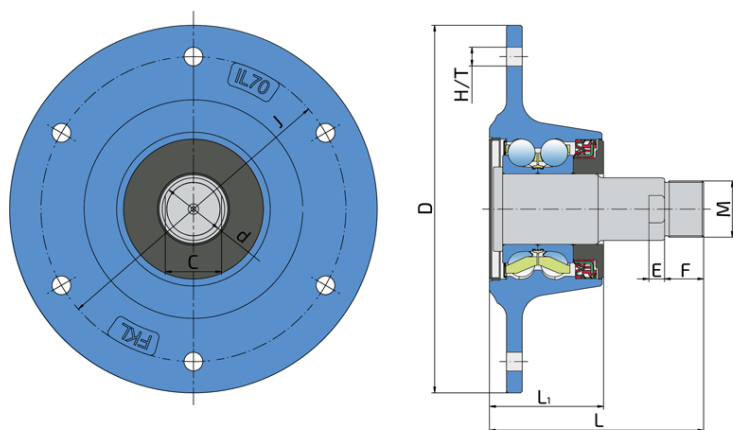
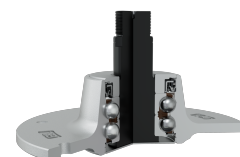


Maintenance-Free Bearing With Integrated Flange For Harsh Tillage

IL70-195/6H-M36x1.5-RH

Maintenance-Free Bearing With Integrated Flange For Harsh Tillage

Disc Harrow



Technical Specification

J	Pitch circle diameter	195 mm
D	Outside diameter	235 mm
H/T	Hole/Thread	6x12 mm
d	Bore diameter	40 mm
C	D-shape hole cut out dimension	36 mm
M	Outer Thread	M36x1.5-RH mm
L	Total length	137 mm
L1	Total flange length	73 mm
E	Length of D shape	10 mm
F	Length of threaded part	25 mm
kg	Mass	7.433 kg
Cdyn	Dynamic load rating	94.45 kN
Co	Static load rating	77.88 kN
Pu	Fatigue load limit	3.27 kN

Sealing

SHEET METAL SHIELD + RS SEAL / DIRTBLOCK SEAL + FORGED COVER PLATE

Sheet metal shield and RS seal on the base side and Dirtblock seal with Forged cover plate on the front side which is exposed to contaminants.

Sheet metal shield and RS seal together with attached disc eliminates the possibility of contamination from the base side.

Dirtblock seal is designed for hard working condition at unfriendly environment. Half metal – half rubber outside diameter provides reliable seal retention in the bore and improves sealing performance. Inside diameter is covered by rubber and improves sealing performance and easy installation. Forged cover plate is additional, strong protection of the Dirtblock seal against mechanical damage.

This sealing provides maximum protection against liquid or solid contaminants, which significantly extends bearing service life.

