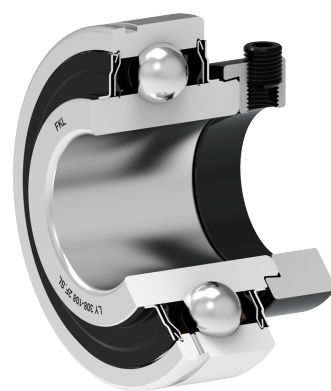
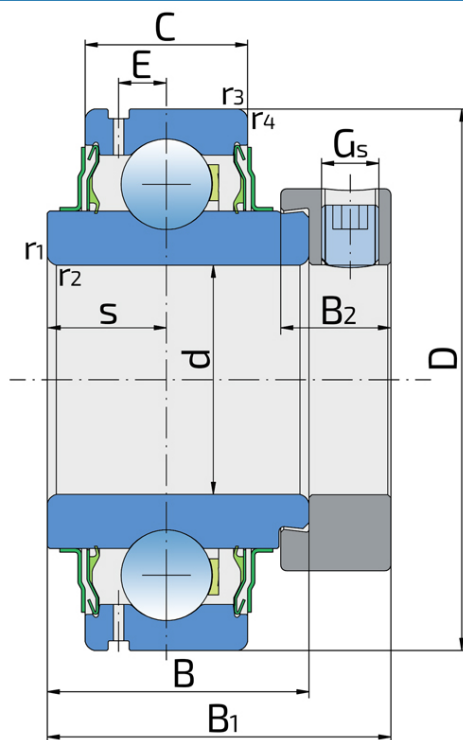


# Y-Ball Bearings With Eccentric Locking Collar

## LY 308-108 2F.SL

Y-Ball Bearings With Eccentric Locking Collar

Harvester



### Technical Specification

d	Bore diameter	38.1 mm
D	Outside diameter	90 mm
B	Width inner ring	43.5 mm
C	Width outer ring	27 mm
s	Distance from inner ring side face to raceway centre	19.8 mm
E	Distance from raceway centre to the hole for lubrication	7.95 mm
Gs	Set screw	3/8-24 UNF inch
sw	Hexagonal key size for set screw	4.763 mm
r1,2	Inner ring Chamfer dimension	1.5 mm
r1,2	Inner ring Chamfer dimension	1.5 mm
B1	Width inner ring with locking collar	57.1 mm
B2	Width locking collar	18.3 mm
Cdyn	Dynamic load rating	41 kN
Co	Static load rating	24 kN
Pu	Fatigue load limit	1.008 kN
kg	Mass	1.16 kg

## Sealing

### F SEAL / F SEAL (2F)

Dual sealing, protection cover placed on the inner ring protects against rough impurity particles and makes the labyrinth with the sheet part of the seal; then the sealing S type, with the labyrinth between the sheet part and the rubber lip that conducts the contact sealing. The friction and speeds are the same as with S but has much better protection against rough impurity particles. It is very good sealing system: the sheet part protects the seal from the soil, dust and rough particles. At the same time makes the labyrinth with the rubber part. The rubber part provides the contact sealing that prevents the penetration of the finer impurities, water, moisture, steam etc. Suitable for heavier conditions due to better protection against foreign matters. It is used with the Y bearings (standard).

