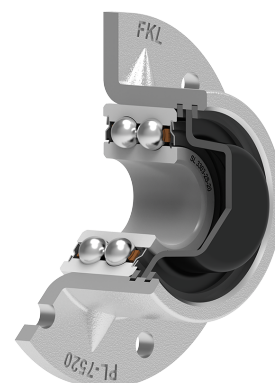
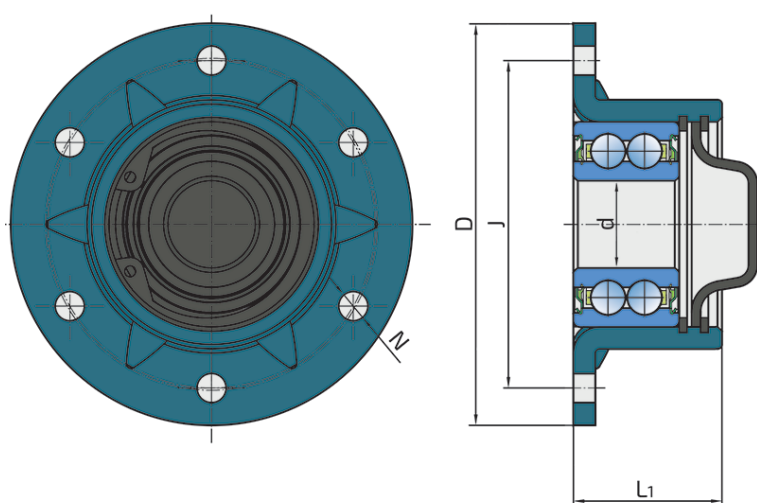


# Bearing Unit (Double row angular contact ball bearing in pressed steel housing)

## PL-7520-SM

Bearing Unit (Double row angular contact ball bearing in pressed steel housing)

Seeding Machine



### Technical Specification

|      |                       |           |
|------|-----------------------|-----------|
| d    | Bore diameter         | 20 mm     |
| D    | Outside diameter      | 92 mm     |
| J    | Pitch circle diameter | 75 mm     |
| L1   | Total flange length   | 34 mm     |
| N    | Hole diameter         | 6.7H12 mm |
| kg   | Mass                  | 0.52 kg   |
| Cdyn | Dynamic load rating   | 19.6 kN   |
| Co   | Static load rating    | 12.5 kN   |
| Pu   | Fatigue load limit    | 0.525 kN  |

## Sealing

### S SEAL / S SEAL+PLASTIC CAP

S seal on the base side and S seal with Plastic cap on the front side which is exposed to the environment.

Plastic cap protects the nut and reduces the penetration of contaminants.

