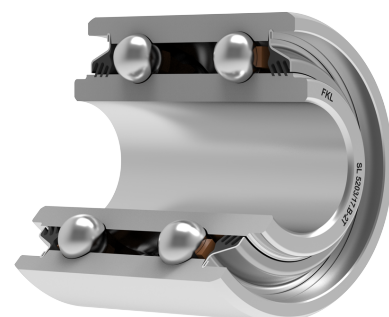
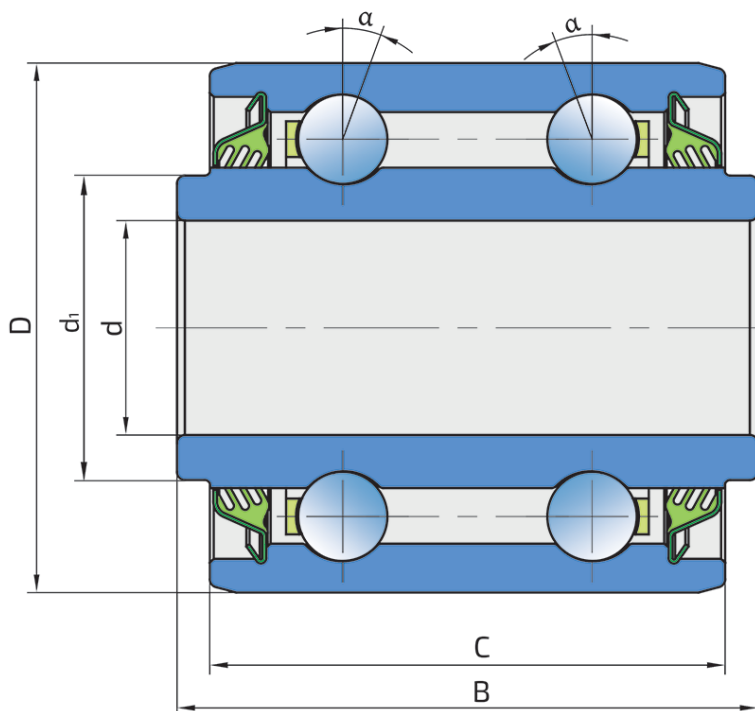


Double Row Angular Contact Ball Bearing

SL 5203/17.B-2T

Double Row Angular Contact Ball Bearing
Seeding Machine



Technical Specification

d	Bore diameter	16.8 mm
d1	Inner ring outside diameter	23 mm
D	Outside diameter	40 mm
B	Width inner ring	43.88 mm
C	Width outer ring	39.12 mm
α	Contact angle	30 °
kg	Mass	0.218 kg
C _{dyn}	Dynamic load rating	14.21 kN
C _o	Static load rating	8.8 kN
P _u	Fatigue load limit	0.37 kN

Sealing

T SEAL / T SEAL (2T)

3-lip seal on the both side of the bearing, provides equal protection against contamination. Recommended for application where the possibility of contamination is the same on the both side.

