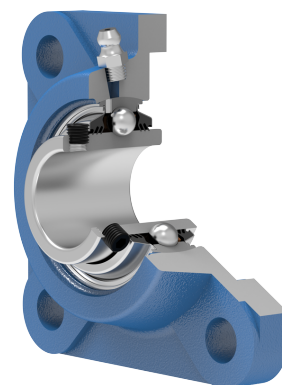
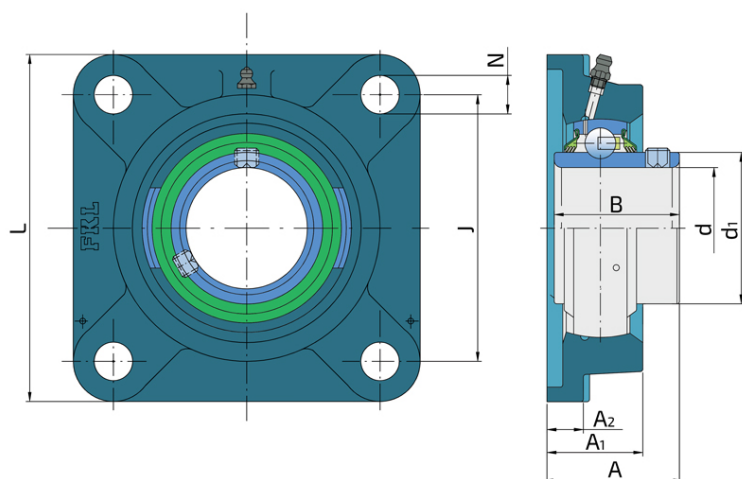


Y-Bearing Flanged Units With Square Grey Cast Iron Housing "F"

LEF 205 2T

Y-Bearing Flanged Units With Square Grey Cast Iron Housing "F"



Technical Specification

| | | |
|------|----------------------------|----------|
| d | Bore diameter | 25 mm |
| d1 | Outer diameter inner ring | 33.6 mm |
| L | Total length | 95 mm |
| J | Distance between the holes | 70 mm |
| N | Hole diameter | 12H13 mm |
| A | Overall width | 35.8 mm |
| A1 | Total housing width | 27 mm |
| A2 | Housing flange thickness | 9.5 mm |
| B | Width inner ring | 34.1 mm |
| kg | Mass | 0.75 kg |
| Cdyn | Dynamic load rating | 14 kN |
| Co | Static load rating | 7.8 kN |
| Pu | Fatigue load limit | 0.328 kN |

Sealing

T SEAL / T SEAL (2T)

3-lip seal on the both side of the bearing, provides equal protection against contamination. Recommended for application where the possibility of contamination is the same on the both side.

