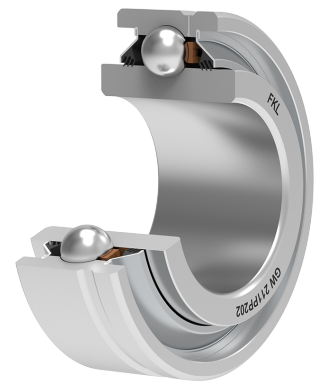
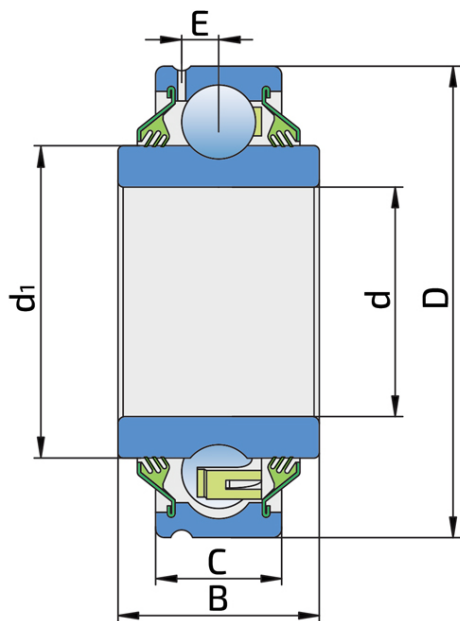


# Round Bore Series With Cylindrical Outer Ring - Relubricable Type

## GW 211PP202

Round Bore Series With Cylindrical Outer Ring - Relubricable Type  
Disc Harrow



### Technical Specification

d	Bore diameter	2.02 inch
d	Bore diameter	51.308 mm
D	Outside diameter	3.94 inch
D	Outside diameter	100 mm
B	Width inner ring	2.37 inch
B	Width inner ring	60.3 mm
C	Width outer ring	1.31 inch
C	Width outer ring	33.34 mm
d1	Outer diameter inner ring	2.72 inch
d1	Inner ring outside diameter	69.1 mm
E	Distance from raceway centre to the hole for lubrication	0.28 inch
E	Distance from raceway centre to the hole for lubrication	7.1 mm
C <sub>dyn</sub>	Dynamic load rating	43.5 kN
C <sub>o</sub>	Static load rating	29 kN
kg	Mass	1.11 kg

## Sealing

---

### T SEAL / T SEAL (2T)

3-lip seal on the both side of the bearing, provides equal protection against contamination. Recommended for application where the possibility of contamination is the same on the both side.

