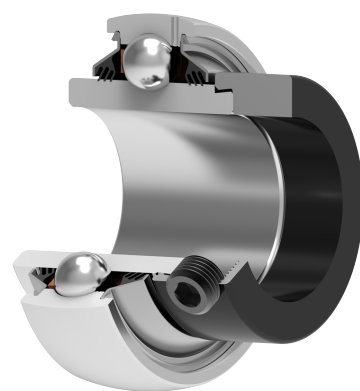
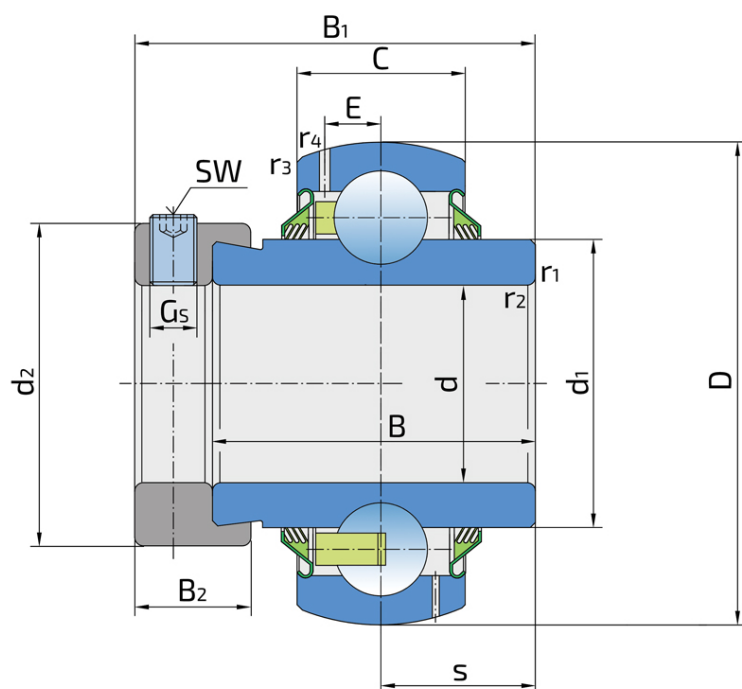


# Y-Ball Bearings With Eccentric Locking Collar

## LY 211 2T

Y-Ball Bearings With Eccentric Locking Collar



### Technical Specification

d	Bore diameter	55 mm
D	Outside diameter	100 mm
B	Width inner ring	71.4 mm
C	Width outer ring	25 mm
s	Distance from inner ring side face to raceway centre	27.8 mm
d1	Outer diameter inner ring	69.1 mm
E	Distance from raceway centre to the hole for lubrication	7 mm
Gs	Set screw	M10x1 mm
sw	Hexagonal key size for set screw	5 mm
r1,2	Inner ring Chamfer dimension	1 mm
r3,4	Outside ring Chamfer dimension	2 mm
B1	Width inner ring with locking collar	55.6 mm
d2	Locking collar outside diameter	76.2 mm
B2	Width locking collar	20.6 mm
Cdyn	Dynamic load rating	43.6 kN
Co	Static load rating	29 kN
Pu	Fatigue load limit	1.25 kN
kg	Mass	1.2 kg

## Sealing

---

### T SEAL / T SEAL (2T)

3-lip seal on the both side of the bearing, provides equal protection against contamination. Recommended for application where the possibility of contamination is the same on the both side.

