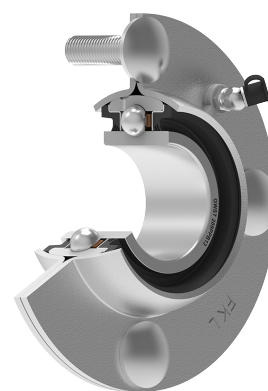
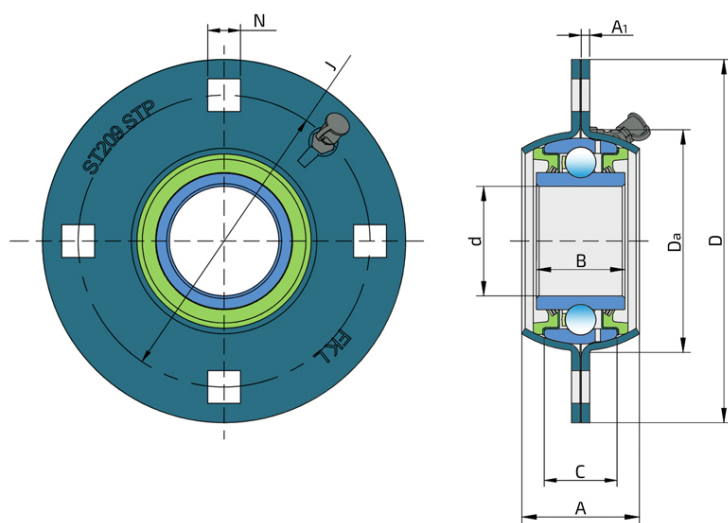


## Round Series

### GWST 209PPB13

#### Round Series

Vertical tillage, sugar cane harvester, disc ripper and disc harrow



#### Technical Specification

d	Bore diameter	1.781 inch
d	Bore diameter	45.24 mm
B	Width inner ring	36.53 mm
A	Overall width	48.5 mm
A1	Width of the top of the housing	3.5 mm
C	Width outer ring	30.1 mm
Da	Centering diameter	93 mm
D	Outside diameter	150 mm
J	Pitch circle diameter	120.5 mm
N	Length of attachment bolt square hole	13.5 mm
kg	Mass	1.836 kg
Cdyn	Dynamic load rating	32.5 kN
Co	Static load rating	20.4 kN
Pu	Fatigue load limit	0.857 kN

## Sealing

---

### T SEAL / T SEAL (2T)

3-lip seal on the both side of the bearing, provides equal protection against contamination. Recommended for application where the possibility of contamination is the same on the both side.

