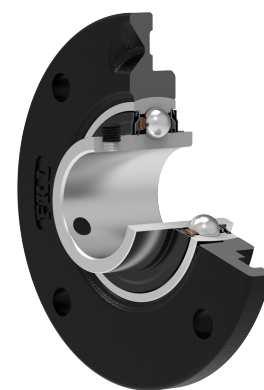
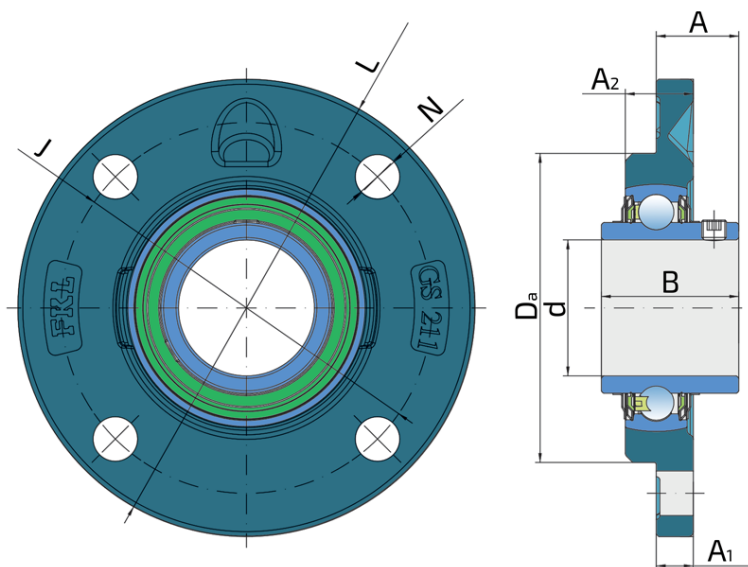


Housing units LEGS, four-bolt flanged housing units, cast iron, centring spigot, grub screw in inner ring, F seals

LEGS 211 2F.H

Housing units LEGS, four-bolt flanged housing units, cast iron, centring spigot, grub screw in inner ring, F seals

Harvester Solution



Technical Specification

d	Bore diameter	55 mm
Da	Centering diameter	125 mm
L	Diameter of housings	185 mm
A	Distance from the housing flange to the front of the inner ring of the bearing	33.4 mm
A1	Housing flange thickness	15 mm
A2	Height of the housing	27.5 mm
J	Pitch circle diameter	150 mm
N	Hole diameter	18 mm
B	Width inner ring	55.6 mm
kg	Mass	3.074 kg
Cdyn	Dynamic load rating	43.6 kN
Co	Static load rating	29 kN
Pu	Fatigue load limit	1.218 kN

Sealing

F SEAL / F SEAL (2F)

Dual sealing, protection cover placed on the inner ring protects against rough impurity particles and makes the labyrinth with the sheet part of the seal; then the sealing S type,

with the labyrinth between the sheet part and the rubber lip that conducts the contact sealing. The friction and speeds are the same as with S but has much better protection

against rough impurity particles. It is very good sealing system: the sheet part protects the seal from the soil, dust and

rough particles. At the same time makes the labyrinth with the rubber part. The rubber part provides the contact sealing that prevents the penetration of the finer impurities, water, moisture, steam etc. Suitable for heavier conditions due to better protection against foreign matters. It is used with the Y bearings (standard).

