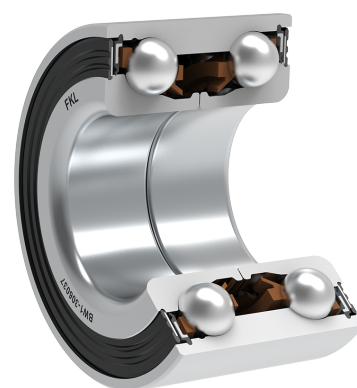
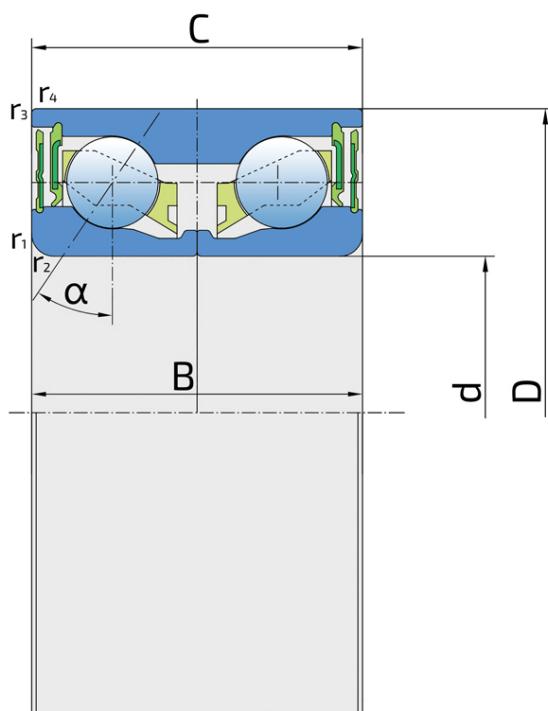


Double Row Angular Contact Ball Bearing

BW1-306037

Double Row Angular Contact Ball Bearing

Disc Harrow



Technical Specification

d	Bore diameter	30 mm
D	Outside diameter	60.03 mm
B	Width inner ring	37 mm
C	Width outer ring	37 mm
α	Contact angle	34 °
r1,2	Inner ring Chamfer dimension	2.5 mm
r3,4	Outside ring Chamfer dimension	0.5 mm
kg	Mass	0.47 kg
Cdyn	Dynamic load rating	37.5 kN
Co	Static load rating	26.5 kN
Pu	Fatigue load limit	1.113 kN

Sealing

DOUBLE RS SEAL / DOUBLE RS SEAL (4RS)

The 4RS sealing on bearing refers to a sealing system that includes four rubber seals (RS) - two on each side of the bearing. 2RS seal on each side ensure good shielding from dirt, dust, and moisture; reduces grease leakage, extending bearing lifetime; reduces the need for frequent re-lubrication.

