**LEŽAJI TOČKA**

Wheel bearings for cars  
*Radlager für Personenfahrzeuge*

**LEŽAJI ZATEZAČA KAIŠA**

Belt tensioners  
*Riemenspannrollen*

**LEŽAJI TOČKA SA PRIRUBNICOM**

HVB unit bearing  
*Radlagereinheiten*

**KONUSNOVALJKASTI LEŽAJI ZA AUTOMOBILSKU INDUSTRIJU**

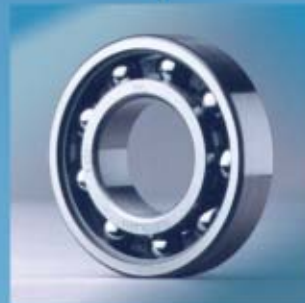
Tapered roller bearings for automotive applications  
*Kegelrollenlager für Personenfahrzeuge*

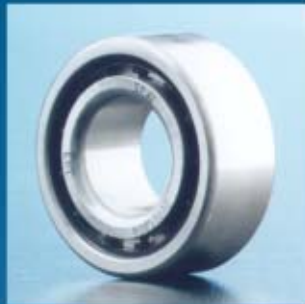
**POTISNI LEŽAJI**

Clutch release bearings  
*Kupplungsdrucklager*

**RADIJALNI JEDNOREDNI KUGLIČNI LEŽAJI**

Deep groove ball bearings  
*Einreihige Rillenkugellager*



**CILINDRIČNOVALJKASTI LEŽAJI**

Cylindrical roller bearings

*Zylinderrollenlagern***SPECIJALNI LEŽAJI MENJAČA, ALTERNATORA, DIFERENCIJALA**

Special bearings for gear box and automotive alternator and differential assembly

*Sonderlagern für Schaltgetriebe, Lichtmaschine und Differenzialgetriebe***KARDANSKA VRATILA ZA PRIVREDNA VOZILA**

Cardan shafts for commercial vehicles

*Gelenkwellen für den Fahrzeugbau***SREDNJI LEŽAJI**

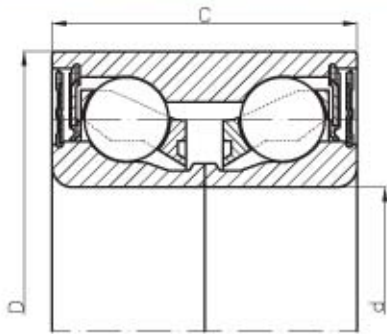
Centre bearings

*Zwischenwellenlagern***KARDANSKI KRSTOVI**

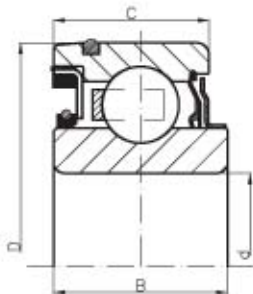
Journal cross assemblies

*Zepfenkreuzgarnituren*

## LEŽAJI TOČKA Wheel bearings for cars Radlager für Personenfahrzeuge



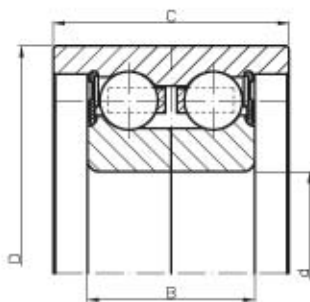
1.



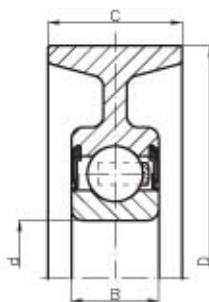
2.

Nazivne mere (mm) Boundary dimensions (mm) Hauptabmessungen (mm)				Oznaka Designation Lagertype	Slika br. Fig No. Bild nr.
d	D	B	C		
30	60		37	616890	1
30	60		37	633095	1
30	60,03		37	633313	1
34	62		37	311316	1
34	64		37	309726	1
34	72,04		33	633669	1
35	68		37	633295	1
35	72		27	609632	1
37	72		37	616194	1
37	72,04		37	633531	1
39	68		37	309791	1
39	68,07		37	309692	1
39	72		37	309639	1
39	75		37	633815	1
40	72		37	311443	1
40	82		32,5	445097	1
42	75		37	645766	1
42	80		42	309609	1
42	82		37	311413	1
30	72	28	25	10/330 PZ	2
30	62	24		361956	2

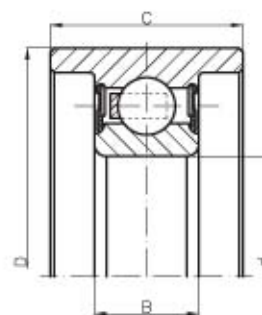
## LEŽAJI ZATEZAČA KAIŠA Belt tensioners Riemenspannrollen



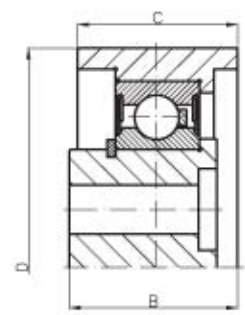
3.



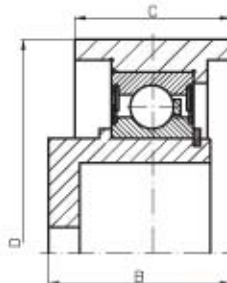
4.



5.



6.

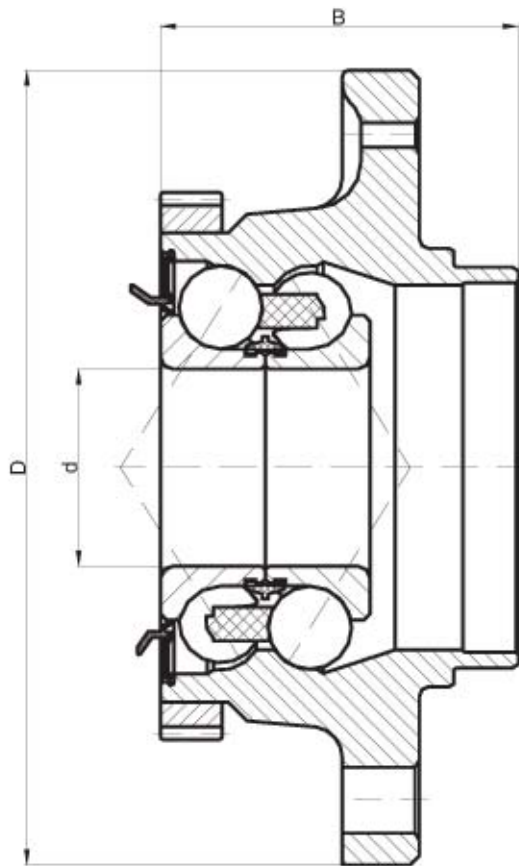


7.

Nazivne mere (mm) Boundary dimensions (mm) Hauptabmessungen (mm)				Oznaka Designation Lagertype	Slika br. Fig No. Bild nr.
d	D	B	C		
25	60	20,6	29	633272	3
25	56	20,6	29	633280	3
20	80		23	631122	4
30	57	13	24	5972277	5
	75	31	30	VKM 38500	6
	64	35,4	27,4	VKM 28500	7



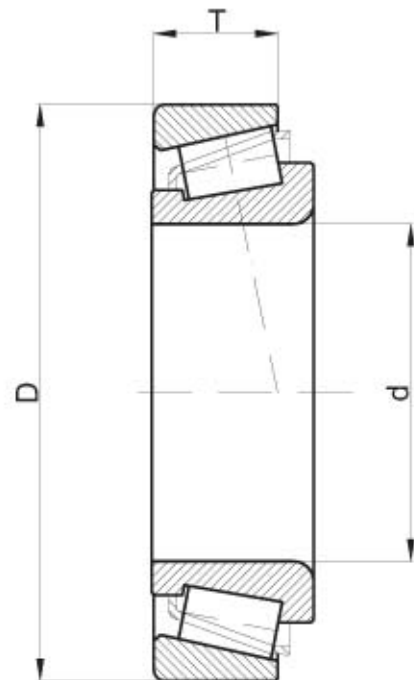
**LEŽAJI TOČKA SA PRIRUBNICOM**  
**HVB unit bearing**  
**Radlagereinheiten**



Nazivne mere (mm) Boundary dimensions (mm) Hauptabmessungen (mm)			Oznaka Designation Lagertype
d	D	B	
25	128	58	25KP1280058
25	128	63,5	25KP12800635
30	117	61,6	30KP11700616
30	120	68,5	30KP12000685
30	130	65	30KP1300065
30	131	63	30KP1310063
31	120	61	31KP1200061
31	128	61	31KP1280061
32	129	58	32KP1290058
35	128	65	35KP1280065
37	139	64	37KP1390064

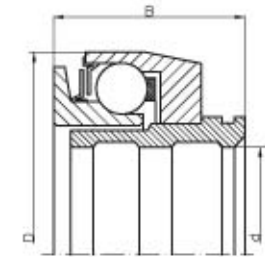


**KONUSNOVALJKASTI LEŽAJI ZA AVTOMOBILSKU INDUSTRIJU**  
**Tapered roller bearings for automotive applications**  
**Kegelrollenlagern für Personenfahrzeuge**

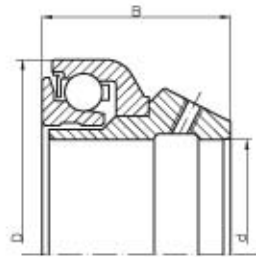


Nazivne mere (mm) Boundary dimensions (mm) Hauptabmessungen (mm)			Oznaka Designation Lagertyp
d	D	T	
15	35	11	639209
15	42	13	639213
17	40	13,25	30203
17,462	39,878	13,843	K-LM 11749 / K-LM 11710
18	47	14,38	639169
19,05	45,237	15,494	K-LM 11949 / K-LM 11910
19,05	49,225	18,034	K-09067 / K-09195
20	47	15,25	30204
20	52	16,25	30304
23	52	15	639175
25	52	16,25	30205
25,4	50,292	14,224	BK-L 44643 / AK-L 44610
26	52	15	639174
26,988	50,292	14,224	BK-L 44649 / AK-L 44610
29	50,292	14,224	331274
30	62	17,25	30206
30	62	21,25	32206
30	72	20,75	30306
31,75	59,131	15,875	K-LM 67048 / K-LM 67010
31,75	62	18,161	K-15123 / K-15245
33,35	76,219	29,37	639337
34,937	76,219	29,37	639338
34,988	59,975	15,875	AK-L 68149 / K-L 68111
35	72	18,25	30207
35	72	24,25	32207
35	80	32,75	32307
36	68	16,5	639180
38,1	65,088	18,034	K-LM 29749 / K-LM 29710
40	80	19,75	30208
44,45	95,25	30,958	AK-HM 903249/W / AK-HM 903210/CL7A
45	85	20,75	30209
65	95	17	639068
70	125	26,25	30214
78	106	17	639058

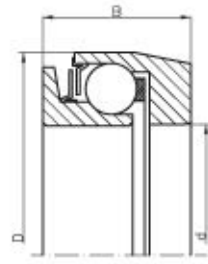
**POTISNI LEŽAJI**  
**Clutch release bearings**  
*Kupplungsdrucklager*



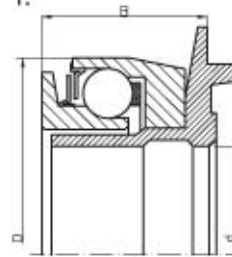
2.



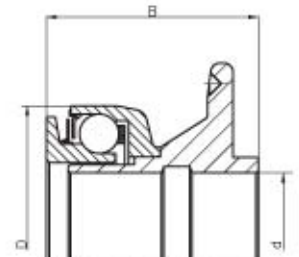
3.



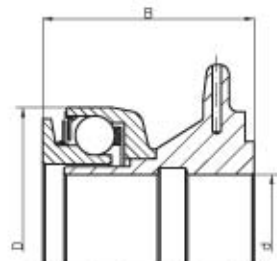
1.



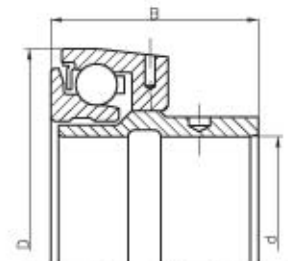
4.



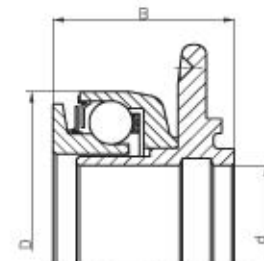
5.



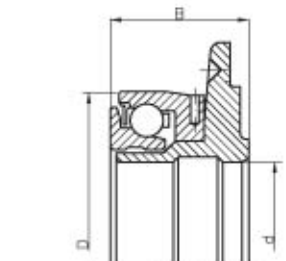
6.



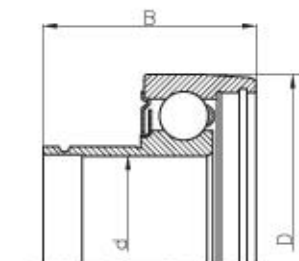
7.



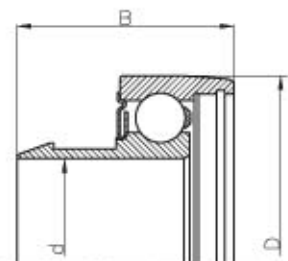
8.



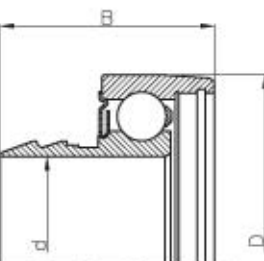
9.



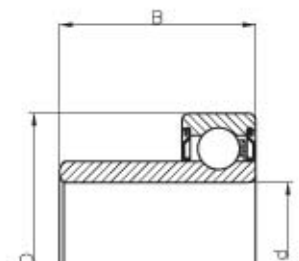
10.



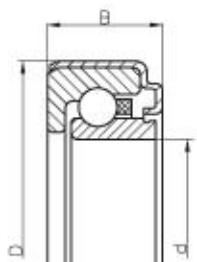
11.



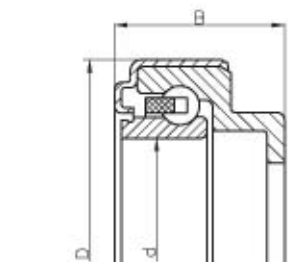
12.



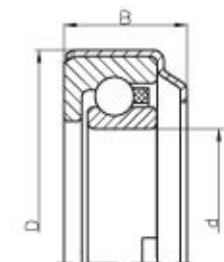
13.



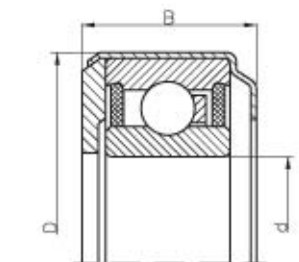
14.



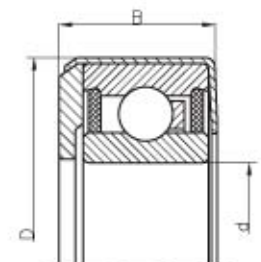
15.



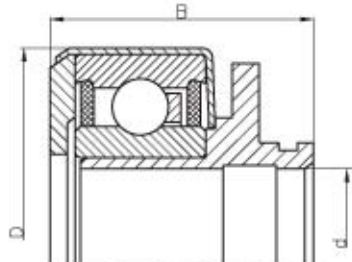
16.



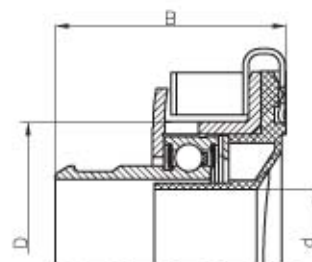
17.



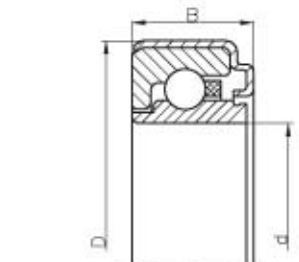
18.



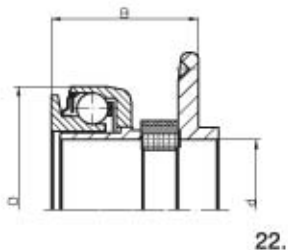
19.



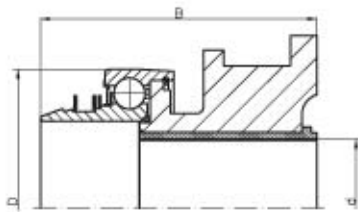
20.



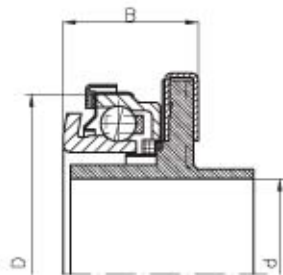
21.



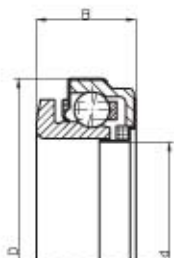
22.



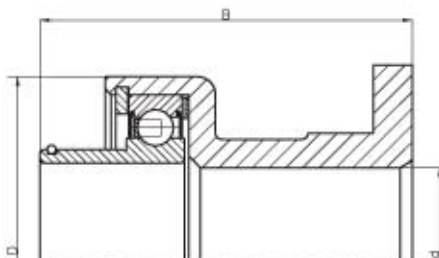
23.



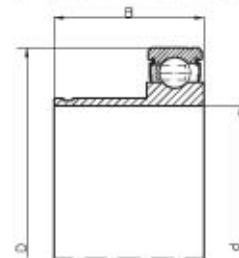
24.



25.



26.



27.

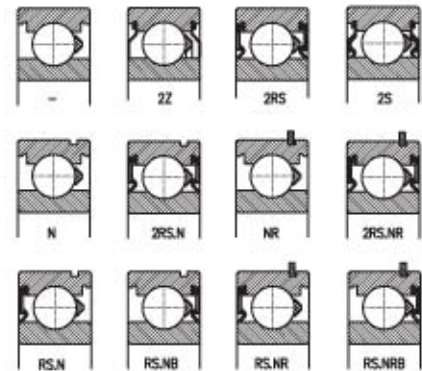
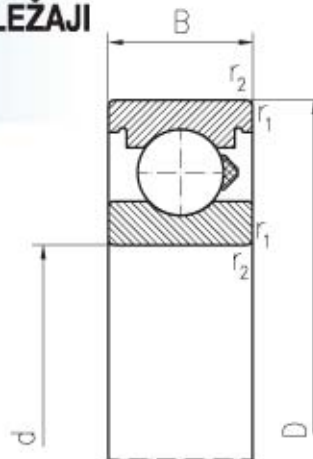
Nazivne mere (mm) Boundary dimensions (mm) Hauptabmessungen (mm)			Oznaka Designation Lagertype	Slika br. Fig No. Bild nr.
d	D	B		
46	68,2	30,5	KZI-1	1
58	92	31	KZI-3	1
58	92	27,5	KZI-3 X1	1
58	92	28	KZI-3 X2	1
71	100	37	KZI-4	1
71	100	33	KZI-4-33	1
70,8	110	40	KZI-4,5	1
70,8	110	37	KZI-4,5-37 X1	1
76	115	39	KZI-5	1
87,5	132	36	KZI-6	1
35,7	68,2	40,5	KZI-1+NL35,7	2
57	110	59	KZI-4,5+NL54T1	2
57	110	59	KZI-4,5+NL57T1	2
57	110	56	KZI-4,5-37 X1+NL57T1	2
61	110	59	KZI-4,5+NL61T1	2
68	115	58	KZI-5+NL68T3 (AI)	2
57	100	76	KZI-4+NL57T7	2
63	110	60	KZI-4,5+NL63T1	2
60	110	75	KZI-4,5+NL60T1	3
54	110	59	KZI-4,5+NL54T5	3
54	110	71	KZI-4,5+NL54T2	4
78	132	46	KZI-6+NL78T2	4
54	110	85	KZI-4,5+NL54T9	4
54	110	62	KZI-4,5+NL54T7	4
54	110	104	KZI-4,5+NL54T10	4
42	92	56	KZI-3+NL42T4	5
42	92	60	KZI-3+NL42T6	5
42	92	48,5	KZI-3X1+NL42T1	5
42	92	68	KZI-3+NL42T3	6
42	92	46,5	KZI-3+NL42T2	7
54	100	69	KZI-4+NL54T4	8
48	100	68	KZI-4+NL48T1	9
60	110	76	KZI-4,5J+NL60T3	9
60	110	123	KZI-4,5J+NL60T4	9
54	110	65	KZI-4-33+NL54T4	9
80,3	125,5	54	KZIZ-5.1	10
78	125,5	52	KZIZ-5.4	10
50	88,5	42	KZIZ-3	11

Nazivne mere (mm) Boundary dimensions (mm) Hauptabmessungen (mm)			Oznaka Designation Lagertype	Slika br. Fig No. Bild nr.
d	D	B		
80,3	125,5	59	KZIZ-5.2	11
78	125,5	57	KZIZ-5.5	11
78	125,5	60	KZIZ-5.3	12
35,9	62	71,8	46671318	13
35,9	62	21,3	4409360X	13
63,5	103,4	22,1	555.24.010	14
68	103,4	22	560.04.010	14
55	90,5	25	306.775 B	14
75	118	34	214.03.02	14
63,5	103,4	38,9	532.04.010	15
69,8	116	28	B 201	16
55	91,9	25	B 204	17
65	101,6	28	PL65-102-28	17
63,5	101,6	23	B 202	18
65	101,6	24,7	PL65-102-25	18
57	102	59,5	PL65-102-25+NL57T21	19
57	102	65	PL65-102-28+NL57T2	19
35,8	68	55	DM 70 TCD	20
69,8	103,4	20,6	W2.3/4	21
48	110	50	KZI-4-33+NL48T2	22
42	92	43	KZI-3X1+NL42T5	22
54	125,5	112	KZIZ-5.3+NL54T11	23
60	125	112	KZIZ-5.3+NL60T6	23
60	125	149,5	KZIZ-5.3+NL60T5	23
34,5	65,5	34	KZIS-1+NL34.5T1	24
34,5	65,5	40	KZIS-1+NL34.5T2	24
38,5	75	49,5	KZIS-1+NL38.5T1	24
42,7	65,5	17,5	KZIS-1	25
63	132	125	KZISZ-5+NL63T2	26
60	125,5	110	KZIZ-5.3+NL60T7	26
60	125,5	149	KZIZ-5.2X1+NL60T8	26
66	112	48,5	KZISZ-5	27

# RADIJALNI JEDNOREDNI KUGLIČNI LEŽAJI

## Deep groove ball bearings

### Einreihige Rillenkugellager



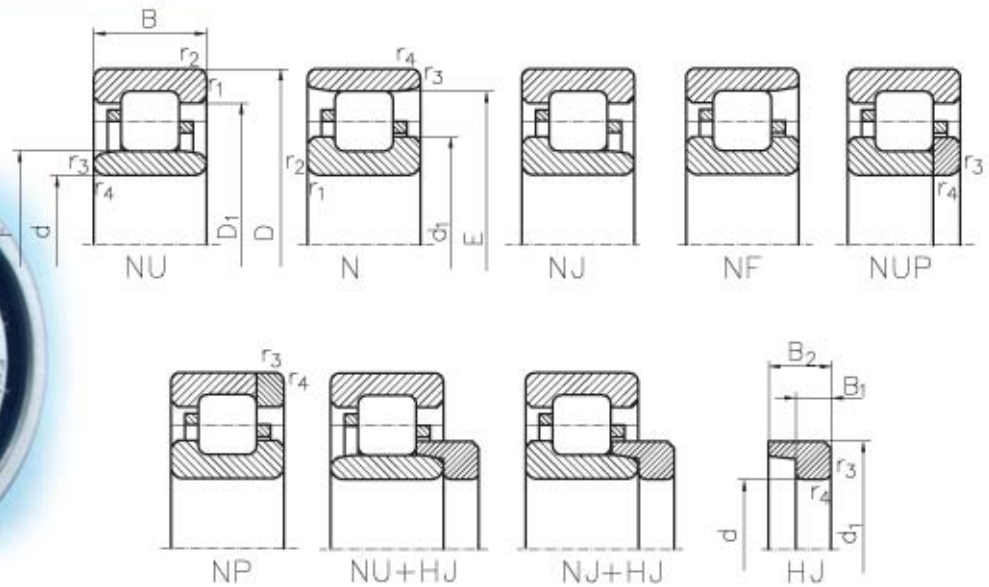
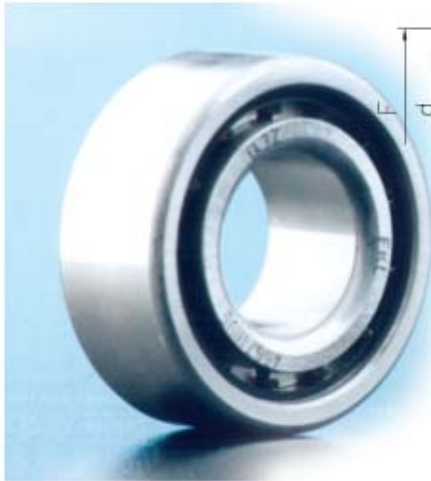
d	Nazivne mere Boundary dimensions Hauptabmessungen (mm)			Masa Mass Gewicht (kg)	Oznaka Designation Lagertyp		
	D	B	$r_{1,2}$ mm		bez zaptivke	sa zaštitnim limom	sa zaptivkom
3	10	4	0,15	0,0015	623	623.2Z	
4	13	5	0,2	0,0032	624	624.2Z	
	16	5	0,3	0,0050	634	634.2Z	
5	16	5	0,3	0,0047	625	625.2Z	
	19	6	0,3	0,0090	635	635.2Z	
6	19	6	0,3	0,0080	626	626.2Z	
	7	19	6	0,3	0,0090	607	607.2Z
22		7	0,3	0,0123	627	627.2Z	627.2RS
8	22	7	0,3	0,015	608	608.2Z	608.2RS
	9	24	7	0,3	0,018	609	609.2Z
26		8	0,3	0,020	629	629.2Z	629.2RS
10	26	8	0,3	0,019	6000	6000.2Z	6000.2RS
	30	9	0,6	0,031	6200	6200.2Z	6200.2RS
	35	11	0,6	0,054	6300	6300.2Z	6300.2RS
12	28	8	0,3	0,022	6001	6001.2Z	6001.2RS
	32	10	0,6	0,037	6201	6201.2Z	6201.2RS
15	32	9	0,3	0,030	6002	6002.2Z	6002.2RS
	35	11	0,6	0,045	6202	6202.2Z	6202.2RS
	35	14	0,6	0,053		62202.2Z	62202.2RS
	42	13	1	0,082	6302	6302.2Z	6302.2RS
	42	17	1	0,111		62302.2Z	62302.2RS
17	35	10	0,3	0,039	6003	6003	6003.2RS
	40	12	0,6	0,065	6203	6203.2Z	6203.2RS
	40	16	0,6	0,085		62203.2Z	62203.2RS
	47	14	1	0,12	6303	6303.2Z	6303.2RS
	47	19	1	0,15		62303.2Z	62303.2RS
20	42	12	0,6	0,069	6004	6004.2Z	6004.2RS
	47	14	1	0,11	6204	6204.2Z	6204.2RS
	47	18	1	0,13		62204.2Z	62204.2RS
	52	15	1,1	0,14	6304	6304.2Z	6304.2RS
	52	21	1,1	0,21		62304.2Z	62304.2RS
22	50	14	1	0,12	62/22	62/22.2RS	
	56	16	1,1	0,18	63/22		
25	47	12	0,6	0,080	6005	6005.2Z	6005.2RS
	52	15	1	0,13	6205	6205.2Z	6205.2RS
	52	18	1	0,15		62205.2Z	62205.2RS
	62	17	1,1	0,23	6305	6305.2Z	6305.2RS
	62	24	1,1	0,33		62305.2Z	62305.2RS
30	55	13	1	0,12	6006	6006.2Z	6006.2RS
	62	16	1	0,20	6206	6206.2Z	6206.2RS
	62	20	1	0,24		62206.2Z	62206.2RS
	72	19	1,1	0,35	6306	6306.2Z	6306.2RS
	72	27	1,1	0,49		62306.2Z	62306.2RS

d	Nazivne mere Boundary dimensions Hauptabmessungen (mm)			Masa Mass Gewicht (kg)	Oznaka Designation Lagertyp		
	D	B	$r_{1,2}$ mm		bez zaptivke	sa zaštitnim limom	sa zaptivkom
35	62	14	1	0,16	6007	6007.2Z	6007.2RS
	72	17	1	0,29	6207	6207.2Z	6207.2RS
	72	23	1	0,39		62207.2Z	62207.2RS
	80	21	1,5	0,46	6307	6307.2Z	6307.2RS
	80	31	1,5	0,68		62307.2Z	62307.2RS
40	68	15	1	0,19	6008	6008.2Z	6008.2RS
	80	18	1,1	0,37	6208	6208.2Z	6208.2RS
	80	23	1,1	0,47		62208.2Z	62208.2RS
	90	23	1,5	0,63	6308	6308.2Z	6308.2RS
	90	33	1,5	0,89		62308.2Z	62308.2RS
45	75	16	1	0,25	6009	6009.2Z	6009.2RS
	85	19	1,1	0,41	6209	6209.2Z	6209.2RS
	85	23	1,1	0,52		62209.2Z	62209.2RS
	100	25	1,5	0,83	6309	6309.2Z	6309.2RS
	100	36	1,5	1,19		62309.2Z	62309.2RS
50	80	16	1	0,26	6010	6010.2Z	6010.2RS
	90	20	1,1	0,46	6210	6210.2Z	6210.2RS
	90	23	1,1	0,55		62210.2Z	62210.2RS
	110	27	2	1,05	6310	6310.2Z	6310.2RS
	110	40	2	1,50		62310.2Z	62310.2RS
55	90	18	1,1	0,39	6011	6011.2Z	6011.2RS
	100	21	1,5	0,61	6211	6211.2Z	6211.2RS
	120	29	2	1,35	6311	6311.2Z	6311.2RS
60	95	18	1,1	0,42	6012	6012.2Z	6012.2RS
	110	22	1,5	0,78	6212	6212.2Z	6212.2RS
	130	31	2,1	1,70	6312	6312.2Z	6312.2RS
65	100	18	1,1	0,44	6013	6013.2Z	6013.2RS
	120	23	1,5	0,99	6213	6213.2Z	6213.2RS
	140	33	2,1	2,10	6313	6313.2Z	6313.2RS
70	110	20	1,1	0,60	6014	6014.2Z	6014.2RS
	125	24	1,5	1,05	6214	6214.2Z	6214.2RS
	150	35	2,1	2,50	6314	6314.2Z	6314.2RS
75	115	20	1,1	0,64	6015	6015.2Z	6015.2RS
	130	25	1,5	1,20	6215	6215.2Z	6215.2RS
	160	37	2,1	3,06	6315		
80	125	22	1,1	0,85	6016		
	140	28	2	1,40	6216	6216.2Z	6216.2RS
	170	39	2,1	3,60	6316		
85	130	22	1,1	0,89	6017		
	150	28	2	1,80	6217	6217.2Z	6217.2RS
	180	41	3	4,25	6317		
90	140	24	1,5	1,15	6018		
	160	30	2	2,15	6218	6218.2Z	6218.2RS
	190	43	3	4,90	6318	6318.2Z	6318.2RS

# CILINDRIČNOVALJKASTI LEŽAJI

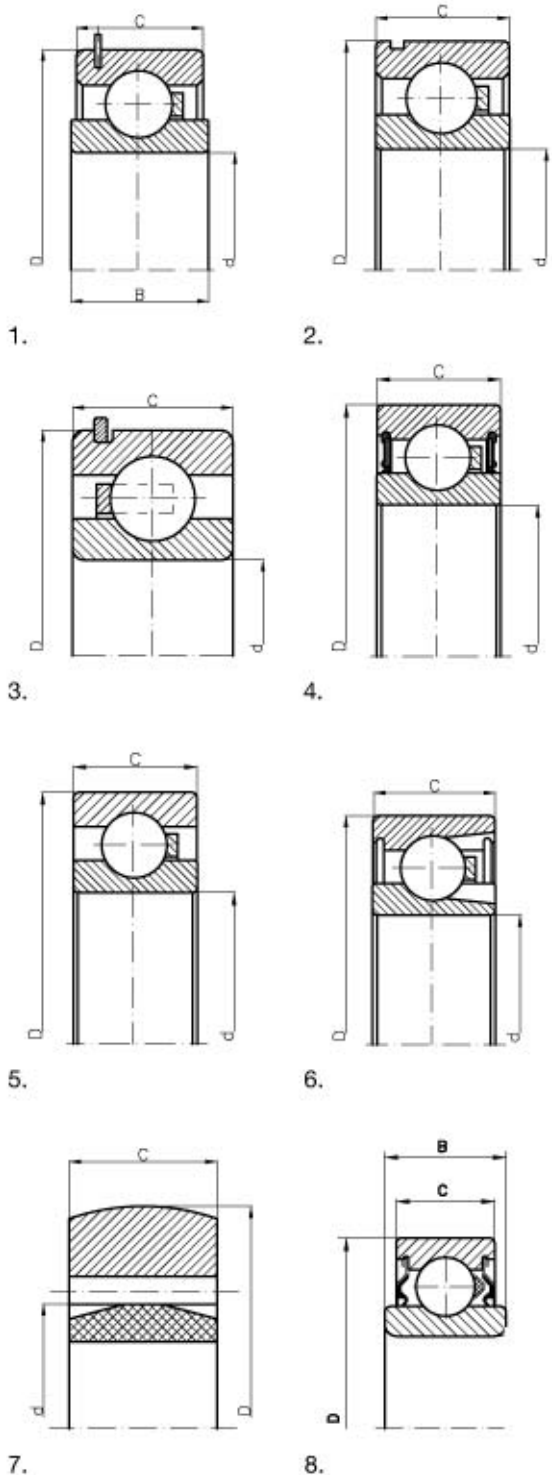
## Cylindrical roller bearings

### Zylinderrollenlager



Nazivne mere (mm) Boundary dimensions (mm) Hauptabmessungen (mm)								Oznaka i masa Designation and Mass Lagertyp und Gewicht								
d	D	B	E	F	r <sub>1,2 min</sub>	r <sub>3,4 min</sub>	kg	kg	kg	kg	kg	kg	kg	kg		
20	52	15	44,5	28,5	1,1	0,6	0,152	NU 304	0,018	HJ 304		0,156	NJ 304	0,165	NUP 304	
25	52	15	45	32	1	0,6	0,135	NU 205	0,014	HJ 205	0,139	N 205	0,138	NJ 205	0,147	NUP 205
	52	18	45	32	1	0,6	0,136	NU 2205	0,015	HJ 2205		0,167	NJ 2205	0,171	NUP 2205	
	62	24	53	35	1,1	1,1	0,348	NU 2305	0,027	HJ 2305		0,348	NJ 2305	0,369	NUP 2305	
30	62	16	53,5	38,5	1,1	0,6	0,206	NU 206	0,025	HJ 206	0,205	N 206	0,206	NJ 206	0,221	NUP 206
35	72	17	61,8	43,8	1,1	0,6	0,304	NU 207 EM	0,034	HJ 207 E	0,300	N 207 EM	0,308	NJ 207 EM	0,315	NUP 207 EM
	72	23	61,8	43,8	1,1	0,6	0,402	NU 2207	0,035	HJ 2207		0,412	NJ 2207	0,422	NUP 2207	
	80	31	70,2	46,2	1,5	1,1	0,72	NU 2307 EM	0,062	HJ 2307 E		0,73	NJ 2307 EM	0,75	NUP 2307 EM	
	100	25	83,02	53	1,5	1,5	1,00	NU 407	0,13	HJ 407		1,05	NJ 407	1,05	NUP 407	
40	80	18	70	50	1,1	1,1	0,38	NU 208	0,050	HJ 208	0,38	N 208	0,39	NJ 208	0,40	NUP 208
	90	33	77,5	53,5	1,5	1,5	0,96	NU 2308	0,093	HJ 2308		0,96	NJ 2308	1,00	NUP 2308	
	110	27	92	58	2	2	1,30	NU 408	0,14	HJ 408		1,30	NJ 408			
45	85	19	75	55	1,1	1,1	0,44	NU 209	0,055	HJ 209	0,43	N 209	0,45	NJ 209	0,46	NUP 209
	100	36	86,5	58,5	1,5	1,5	1,30	NU 2309	0,12	HJ 2309		1,33	NJ 2309	1,35	NUP 2309	
50	90	20	80,4	60,4	1,1	1,1	0,49	NU 210	0,061	HJ 210	0,49	N 210	0,49	NJ 210	0,51	NUP 210
	110	27	95	65	2	2	1,14	NU 310	0,15	HJ 310	1,01	N 310	1,17	NJ 310	1,17	NF 310
55	100	21	90	66	1,5	1,1	0,67	NU 211 EM	0,087	HJ 211 E	0,67	N 211 EM	0,68	NJ 211 EM	0,69	NUP 211 EM
	100	25	88,5	66,5	1,5	1,1	0,79	NU 2211	0,089	HJ 2211		0,81	NJ 2211	0,83	NUP 2211	
70	150	35	133	89	2,1	2,1	2,89	NU 314 EM	0,33	HJ 314 E	2,85	N 314	2,99	NJ 314 EM	3,19	NUP 314 EM
75	115	20	105	85	1,1	1	0,75	NU 1015 M						0,78	NUP 1015 M	
80	140	26	127,4	95,3	2	2	1,60	NU 216 EM	0,21	HJ 216 E	1,63	N 216 EM	1,67	NJ 216 EM	1,85	NUP 216 EM
110	200	38	180,5	132,5	2,1	2,1	4,80	NU 222 E	0,62	HJ 222 E		4,90	NJ 222 E	5,00	NUP 222 E	
130	230	40	204	156	3	3	6,80	NU 226 EM	0,78	HJ 226 E	6,75	N 226 EM	7,02	NJ 226 EM	7,14	NUP 226 EM

**SPECIJALNI LEŽAJI MENJAČA, ALTERNATORA, DIFERENCIJALA**  
**Special bearings for gear box and automotive alternator and differential assembly**  
**Sonderlager für Schaltgetriebe, Lichtmaschine und Differenzialgetriebe**



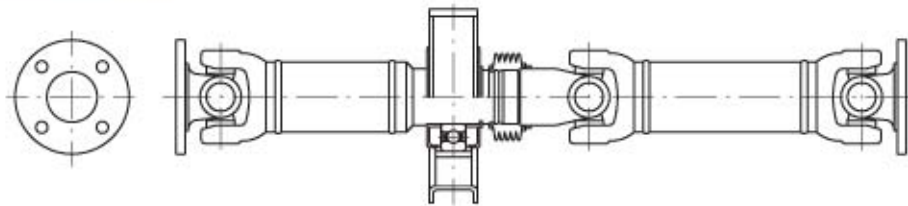
Nazivne mere (mm) Boundary dimensions (mm) Hauptabmessungen (mm)				Oznaka Designation Lagertype	Slika br. Fig No. Bild nr.
d	D	B	C		
30	67	17,5	15,5	014004	1
25	52		15	440256	2
30	72		19	9197000	2
40	75		16	014010	2
22	50		14	62/22 NR	3
25	52		15	616492	3
28	67		18	46671082	3
28	67		18	616034A	3
30	72		19	615721	3
15	35		14	62202.2RS.C3	4
15	42		17	62302.2RS.C3	4
22	50		14	62/22.2RS	4
25	52		18	62205.2RS	4
30	65		21	614593.C4	4
30	72		19	616480A	4
17	44		14	613095	5
22	50		17	614944	5
25	57		16	613742C	5
27	55		15	613392 A	5
40	80		18	208000	6
15,364	27,8		9,3	2.11.0	7
16	29,2		9,6	2.13.0	7
17,272	29,95		10,2	2.15.0	7
17,86	30,42		11	2.17.0	7
17,89	31,95		10,6	1.40.4	7
18,639	31,95		11	2.20.0	7
19,817	33,9		11,8	2.23.0	7
20,453	35,51		11,8	2.26.0	7
21,725	37,1		12,6	2.29.0	7
22,361	38		12,8	2.33.0	7
22,997	38,7		13,8	2.37.0	7
23,633	39,85		13,8	2.41.0	7
25	52	16,8	15	LS 205 SHA	8
30	62	24	16	LS 206 SHA	8
35	72	25	17	LS 207 SHA	8
40	80	27	21	LS 208 SHA	8
45	85	27	21	LS 209 SHA	8
50	90	30	22	LS 210 SHA	8
55	100	31	23	LS 211 SHA	8



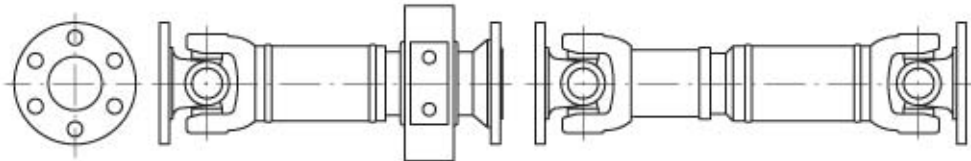
**KARDANSKA VRATILA ZA PRIVREDNA VOZILA**  
**Cardan shafts for commercial vehicles**  
**Gelenkwellen für den Fahrzeugbau**

**MERCEDES**

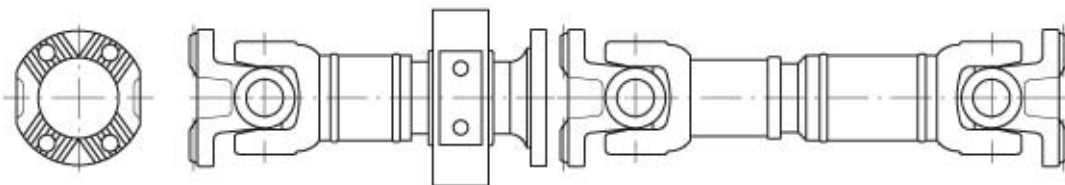
SPRINTER



VARIO

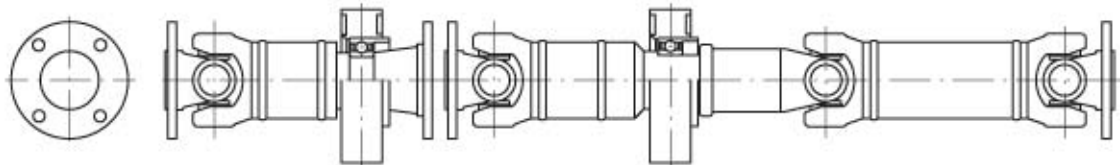


ATEGO  
ACTROS

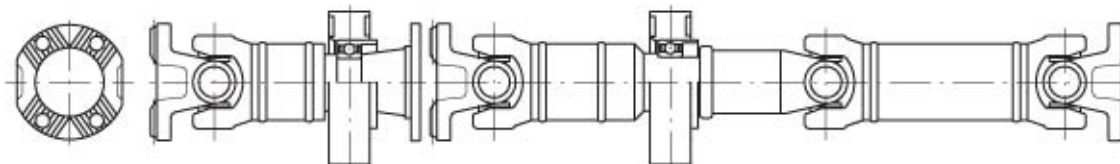


**IVECO**

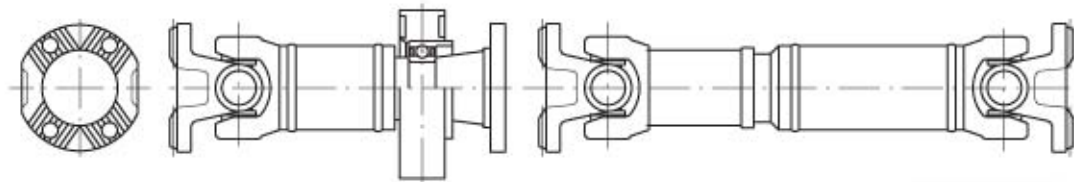
DAILY 35  
DAILY 50



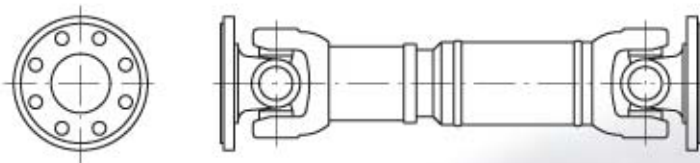
DAILY 65



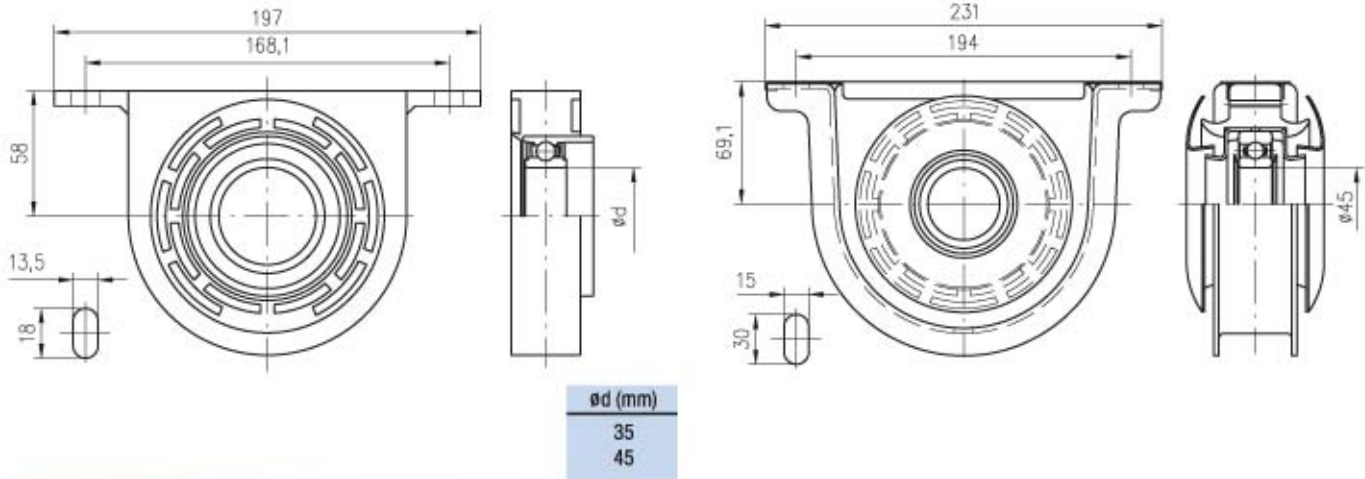
EUROCARGO



**VOLVO**

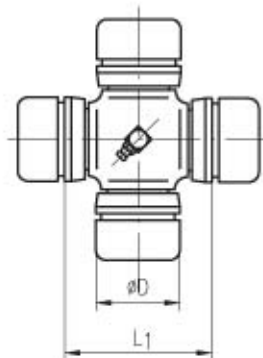
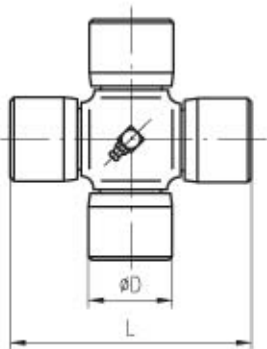


**SREDNJI LEŽAJI**  
**Centre bearings**  
**Zwischenwellenlagern**



$\varnothing d$ (mm)
35
45

**KARDANSKI KRSTOVI**  
**Journal cross assemblies**  
**Zepfenkreutzgarnituren**



$\varnothing D$ (mm)	$L_1$ (mm)	$\varnothing D$ (mm)	$L_2$ (mm)
20	44	34	90
20	47	35	106,5
20	47,2	38	105,8
22	55	35	96,8
22	55,2	42	104,5
22	59	47	131,9
23	52,2	47	156
24	61	48	116,5
26	69,8	48	121,8
27	70	48	126
27	71,2	50	138,3
27	75	50	155
27	79,1	52	133
27	80	52	154
27	84	53	135
28,5	70,9	57	144
30	81,8	57	152
30	83	65	172,4
30,2	106	72	185
31	89	74	180,5
32	76	74	217
32	82	83	220
32	107	83	231,4

$\varnothing D$ (mm)	$L_1$ (mm)
45	72,1
68	89

**ČEONO PODMAZIVANJE MOGUĆE JE PORUČITI ZA SVE VELIČINE**  
**BUSH LUBRICATION AVAILABLE FOR EACH SIZE ON REQUEST**  
**BÜCHSENBODENABSCHMIERUNG AUF ANFRAGE**

